

Baseball

Section I

Bill Hoehne

1 tempo (♩ = c. 160)

mp *crescendo*

ff *a tempo* mf *crescendo*

ff *f*

sub. p *ff*

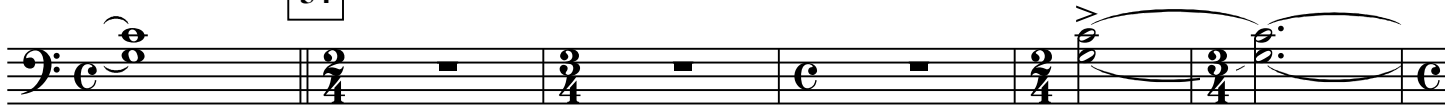
31

36 *fff* *f*

48



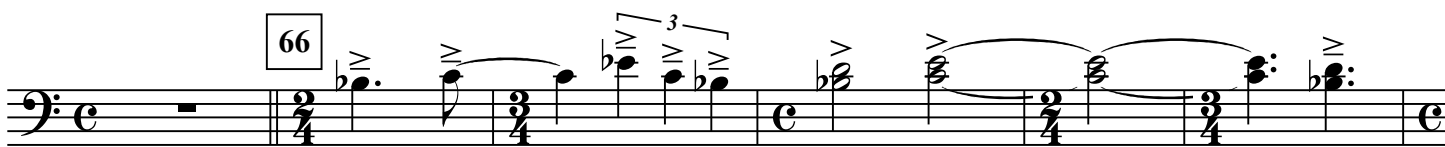
54



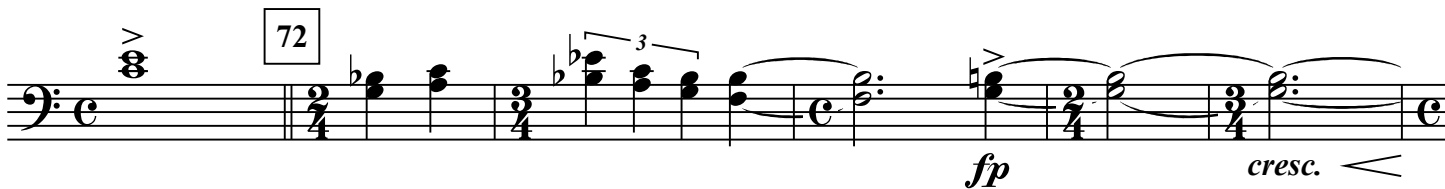
60



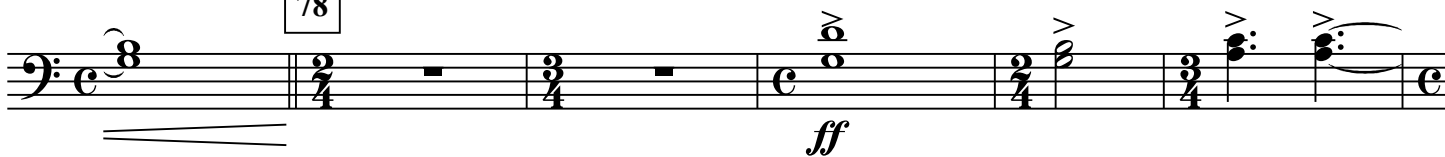
66



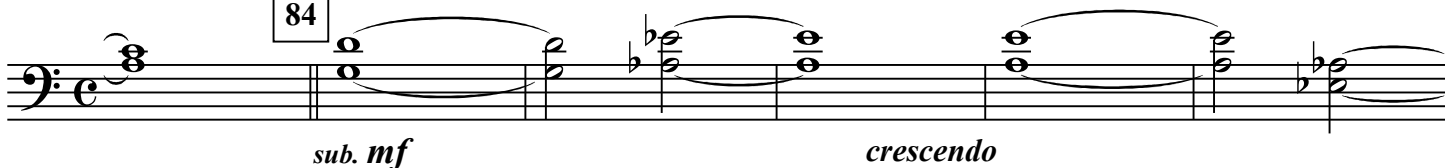
72



78



84



A single staff of music in bass clef. The notation includes several chords and melodic lines. The first measure shows a chord with a sharp sign. The second measure has a chord with a flat sign and a slur. The third measure has a chord with a sharp sign and a slur. The fourth measure has a chord with a flat sign and a slur. The fifth measure has a chord with a flat sign and a slur. The sixth measure has a chord with a sharp sign and a slur. The seventh measure has a chord with a flat sign and a slur. The eighth measure has a chord with a flat sign and a slur. The ninth measure has a chord with a flat sign and a slur. The tenth measure has a chord with a flat sign and a slur. The eleventh measure has a chord with a flat sign and a slur. The twelfth measure has a chord with a flat sign and a slur. The thirteenth measure has a chord with a flat sign and a slur. The fourteenth measure has a chord with a flat sign and a slur. The fifteenth measure has a chord with a flat sign and a slur. The sixteenth measure has a chord with a flat sign and a slur. The seventeenth measure has a chord with a flat sign and a slur. The eighteenth measure has a chord with a flat sign and a slur. The nineteenth measure has a chord with a flat sign and a slur. The twentieth measure has a chord with a flat sign and a slur. The notation ends with a double bar line.